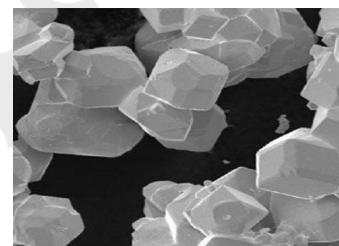


Tungsten Powder

APPLICATION

Used for diamond tools, powder metallurgy, hot spraying, tungsten contact alloys, high-density shielding materials, large tungsten slab or other tungsten products.



SPECIFICATIONS

Deep or bright grey powder.

CHEMICAL COMPONENT %			
W		≥ 99.95	
Fe	<0.0300	Sn	<0.0020
Si	<0.0050	Cu	<0.0020
Al	<0.0030	Na	< 0.020
Mn	<0.0020	S	<0.0020
Ca	<0.0030	C	<0.0100

PHYSICAL CHARACTER			
Type	Particle Size	Scott Density(g/cm ³)	Oxygen content (%)
CNPC-W01	Fsss 1-3um	3.3-4.2	0.25
CNPC-W02	Fsss 3-5um	3.8-4.8	0.2
CNPC-W03	Fsss 5-8um	4.2-5.2	0.2
CNPC-W04	Fsss 8-15um	4.5-6.0	0.15
CNPC-W60	60mesh	8.0-8.9	0.05
CNPC-W100	100mesh	7.8-8.5	0.05
CNPC-W200	200mesh	7.3-8.0	0.05

DRUMS

--Size: Dia 30 cm x 30cm

--Net Weight:25kgs

