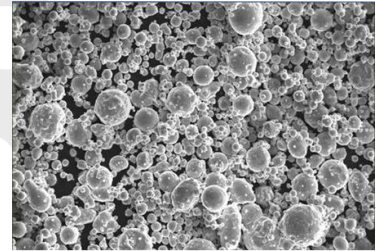


# Nickel Powder

## APPLICATION

Used in hard alloy, P/M, magnetic material, diamond tools, high temperature alloy, rechargeable battery, carbon brushes and friction materials etc.



## SPECIFICATIONS

CHEMICAL COMPONENT %			
Ni	≥ 99.8	Co	< 0.01
Fe	< 0.01	Pb	< 0.01
O	< 0.53	C	< 0.02

PHYSICAL CHARACTER		
TYPE	Particle Size	Apparent Density (g/cm <sup>3</sup> )
CNPC-Ni100-500	100mesh,200mesh,300mesh,500mesh	3.0-4.0
CNPC-HNi100-200	Fsss 1-2um, Fsss 2-3um	0.70-1.10

## ULTRUIFINE NICKEL POWDER

PHYSICAL CHARACTER			
TYPE	Average size	Surface Area (m <sup>2</sup> /g)	Tap Density(g/cm <sup>3</sup> )
CNPC-UNi100	1um	0.6-0.7	3.6
CNPC-UNi200	0.5um	1.3-1.9	3.0
CNPC-UNi300	0.3um	2.1-2.4	2.8
CNPC-UNi400	0.1um	3.9-5.5	2

## DRUMS

--Size: Dia 30 cm x 30cm

--Net Weight:25kgs

