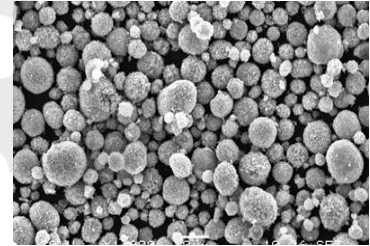


Iron Alloy Powder

PHYSICAL AND CHEMICAL PROPERTIES

APPLICATION

Widely used in Diamond Tools, P/M Parts, chemical catalyst, carbon brushes, friction materials, spraying materials, welding powder and decoration materials etc.



Irregular shape.

SPECIFICATIONS

| Grade | Composition (%) | Physical Properties | | | Particle Size(%) | | | | |
|---------------|------------------------------------|---------------------|----------------|------------------|------------------|---------------|----------------|--------------------------|--|
| | | A.D. g/cm3 | GD600 g/cm3 | Flow, sec/50g | 100 (150μm) | 200 (75μm) | 325 (45μm) | | |
| CNPC-FEAB | Cu 1.3-1.7, Ni 1.7-2.2, Mo 0.4-0.6 | 2.9-3.1 | ≥7.1 | ≤25 | ≤3 | ≤45 | 85-95 | | |
| CNPC-FEAE | Cu 1.3-1.7, Ni 3.6-4.4, Mo 0.4-0.6 | | | | | | | | |
| CNPC-FeCu30 | Fe 70, Cu 30 | 3.2-3.8 | - | - | - | ≤8 | 45-60 | | |
| CNPC-FeCu40 | Fe 80, Cu 20 | | | | | | | | |
| CNPC-FeCuNiSn | Fe 85, Cu 10, Ni 3, Sn 2 | 2.4-2.7 | - | - | - | ≤8 | 45-60 | | |
| CNPC-FeCuCo | Cu 10-60, Co 4-25 | | | | | | | D50 10-15μm; D50 15-20μm | |
| CNPC-FeCo | Fe 82 Co18; Fe50 Co50 | | | | | | | D50: 8-15μm | |

DRUMS

--Size: Dia 30 cm x 30cm

--Net Weight:25kgs

