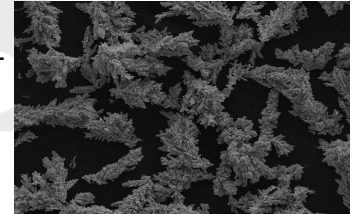


# Electrolytic Copper Powder

## APPLICATION

Widely used in diamond tools, carbon brushes, friction materials, P/M products, abrasive materials, pastes, electrical and electronic applications.



High purity, dendritic shape powder, high electrical and thermal conductivity.

### CHEMICAL COMPONENT %

Cu	≥ 99.7	◆ Acid insoluble	< 0.05
Hydrogen loss	< 0.20		

### CNPC-Cu100

#### PHYSICAL CHARACTER

+ 100 mesh (%)	5-10	◆ Apparent Density (g/cm <sup>3</sup> )	1.7-2.0
+ 150 mesh (%)	10-30	+ 325 mesh (%)	10-40
+ 200 mesh (%)	30-60	-325 mesh (%)	Balance

### CNPC-Cu200

#### PHYSICAL CHARACTER

+ 200 mesh (%)	0-10	◆ Apparent Density (g/cm <sup>3</sup> )	1.5-2.0
+ 325 mesh (%)	20-30	-325 mesh (%)	60-70

### CNPC-Cu300

#### PHYSICAL CHARACTER

+ 325 mesh (%)	0-5	◆ Apparent Density (g/cm <sup>3</sup> )	1.2-1.9
-325 mesh (%)	95-100		

### CNPC-Cu400

#### PHYSICAL CHARACTER

+ 200 mesh (%)	0-10	◆ Apparent Density (g/cm <sup>3</sup> )	1.3-1.6
+ 325 mesh (%)	15-35	-325 mesh (%)	Balance

## DRUMS

--Size: Dia 30 cm x 30cm  
--Net Weight:25kgs

