

Cobalt Powder

PHYSICAL AND CHEMICAL PROPERTIES

Widely used in the metallurgical products of hard alloys, diamond tools, high temperature alloys and magnetic materials, and in the chemicals of rechargeable batteries, rocket fuel and medicine.

SPECIFICATIONS

CHEMICAL COMPONENT %			
Co		≥ 99.95	
Ni	< 0.0045	O	< 0.45
Pb	< 0.0022	Na	< 0.0033
Al	< 0.0013	Cu	< 0.0024
Zn	< 0.0014	C	< 0.025

CNPC-C0100

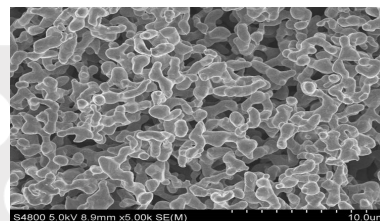
PHYSICAL CHARACTER			
Apparent Density (g/cm ³)	0.4-1.0	Particle size(μm)	D50 <15
Fess(μm)	1.5-2.0		

CNPC-C0200

PHYSICAL CHARACTER			
Apparent Density (g/cm ³)	0.4-1.0	Particle size(μm)	D50 <10
Fess(μm)	1.0-1.5		

CNPC-C0300

PHYSICAL CHARACTER			
Apparent Density (g/cm ³)	0.4-0.75	Particle size(μm)	D50 <8
Fess(μm)	0.8-1.0		



Grey powder with drop form, easy to be oxidized in the moist air.

DRUMS

--Size: Dia 30 cm x 30cm
--Net Weight:25kgs

