

# Atomized Copper Powder

## PHYSICAL AND CHEMICAL PROPERTIES

### APPLICATION

Widely used in Diamond Tools, P/M Parts, chemical catalyst, carbon brushes, friction materials, spraying materials, welding powder and decoration materials etc.

CHEMICAL COMPONENT %			
Cu	≥ 99.7	◆ Acid insoluble	< 0.1
Hydrogen loss	< 0.3		

### CNPC-WCu 100    CNPC-GCu 100

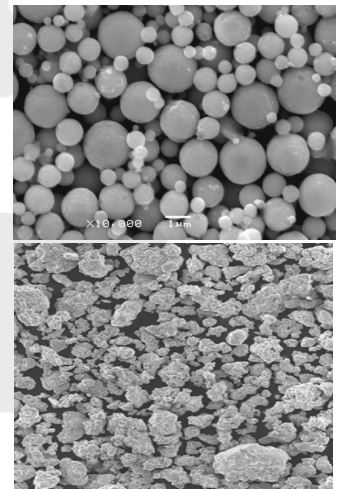
PHYSICAL CHARACTER			
+ 100 mesh (%)	< 5	◆ Apparent Density (g/cm <sup>3</sup> )	2.4-3.8 or 4.8-5.2
+ 200 mesh (%)	40-60	+ 325 mesh (%)	Balance

### CNPC-WCu 200    CNPC-GCu 200

PHYSICAL CHARACTER			
+ 200 mesh (%)	< 5	◆ Apparent Density (g/cm <sup>3</sup> )	2.4-3.8 or 4.8-5.2
+ 325 mesh (%)	Balance	- 325 mesh (%)	> 50

### CNPC-WCu 300    CNPC-GCu 300

物理性能 PHYSICAL CHARACTER			
+ 325 mesh (%)	< 10	◆ Apparent Density (g/cm <sup>3</sup> )	2.4-3.8 or 4.8-5.2
-325 mesh (%)	> 90		



Light rosy, irregular or spherical powder.

### DRUMS

--Size: Dia 30 cm x 30cm

--Net Weight:25kgs

